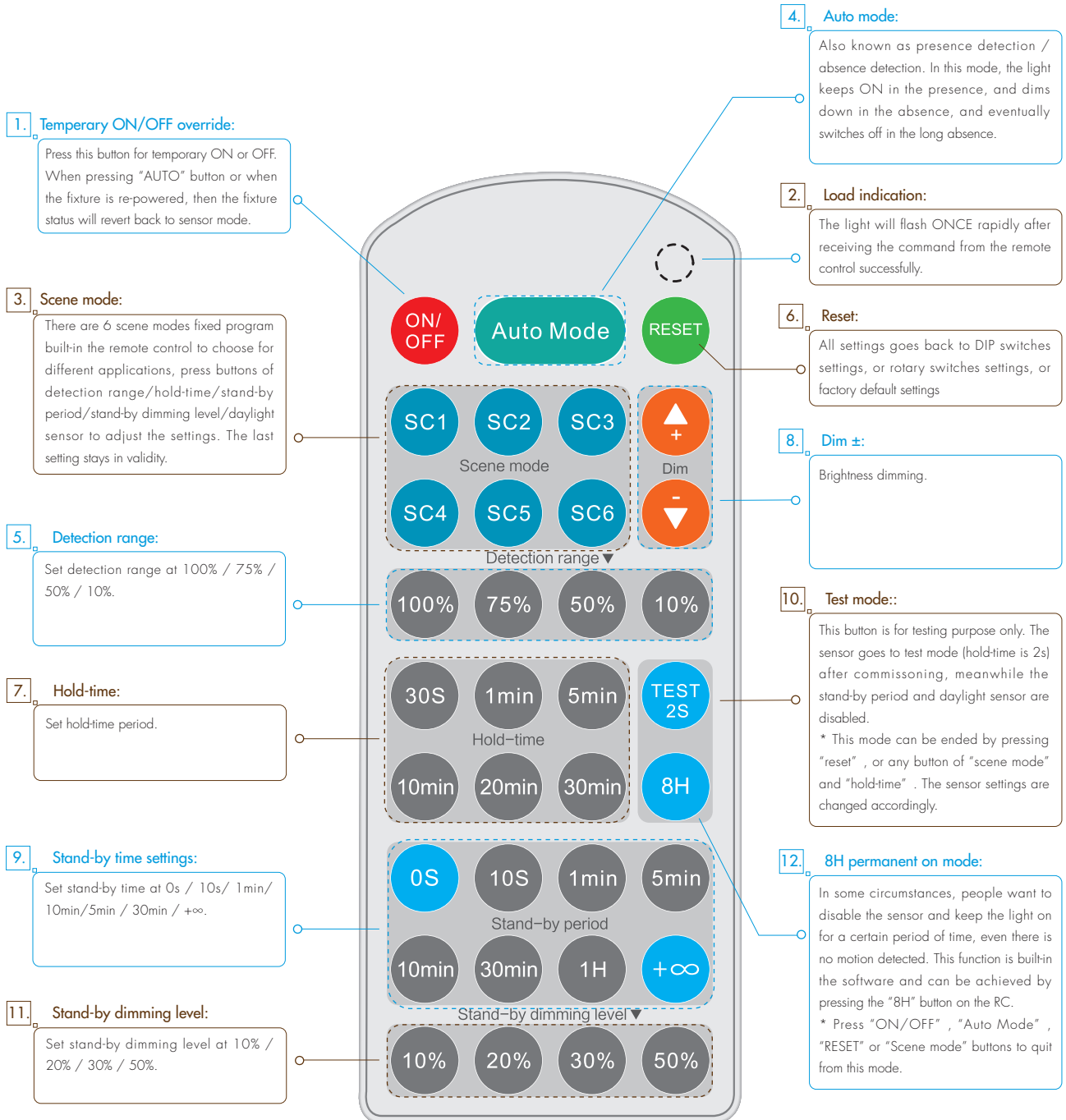


Appendixes & Additional Documents



Remote Controller HRC-01



HRC-01

Remote Controller HRC-04

1. Temporary ON/OFF override:

Press this button for temporary ON or OFF. When pressing "AUTO" button or when the fixture is re-powered, then the fixture status will revert back to sensor mode.

4. Scene mode:

There are 4 scene modes fixed program built-in the remote control to choose for different applications, press buttons of detection range/stand-by dimming level/hold-time/stand-by period/daylight sensor to adjust the settings. The last setting stays in validity.

6. Power output:

By pressing this button to select light output at 80% (at initial 10,000 hours) or 100%.

8. Detection range:

Set detection range at 100% / 75% / 50% / 10%.

9. Stand-by dimming level:

Set stand-by dimming level at 10% / 20% / 30% / 50%.

11. Hold-time:

Set hold-time period. 2s is for testing purpose only, stand-by period and daylight sensor settings are disabled in this mode.

13. Stand-by time settings:

Set stand-by time at 0s / 10s / 1min / 10min / 5min / 30min / +∞.

4. Scene mode:

Also known as presence detection / absence detection. In this mode, the light keeps ON in the presence, and dims down in the absence, and eventually switches off in the long absence.

3. Load indication:

The light will flash ONCE rapidly after receiving the command from the remote control successfully.

5. Reset:

All settings goes back to default settings: Detection range: 100%; Hold-time: 1min; Stand-by period: 5min; Stand-by dimming level: 20%; Daylight sensor: Lux disable; Rx 100%

7. RF grouping:

Short press "Learn/Erase" button to activate pairing mode. By pressing "Send" button, the commander will beep and send the transmission signal. Long press "Learn/Erase" button for 3s, and the receiver unit clears all commands it has received before.

10. Brightness on RF signal

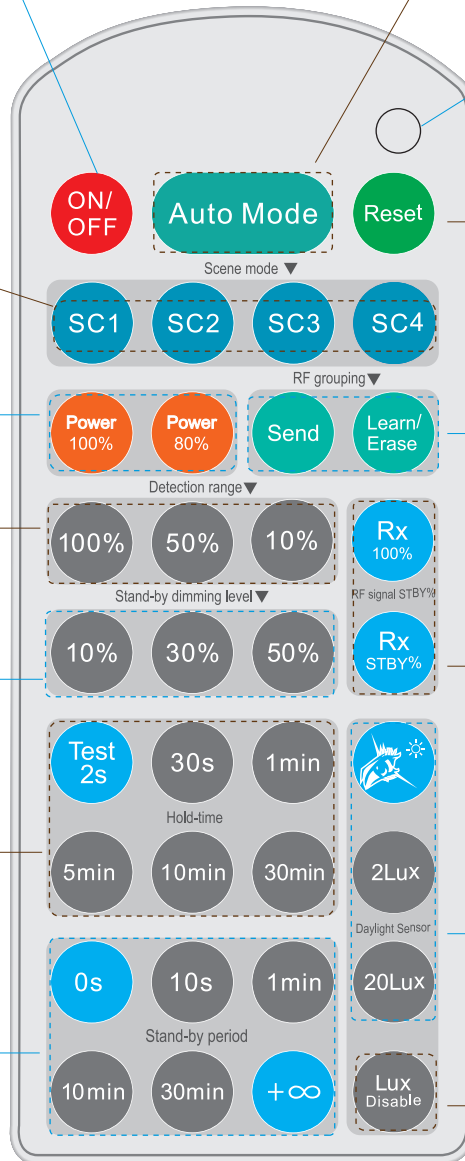
Press "Rx 100%" button, the light(s) on slave operate at 100% on upon receiving RF ON signal; Press "Rx STBY%" button, the light(s) switch on at the pre-set stand-by dimming level.

12. Daylight threshold setting & Ambient lux sampling:

Set daylight threshold value 2 lux / 20 lux.
Eye button: study the surrounding lux level and save it as the new daylight threshold / target lux level for daylight harvesting.

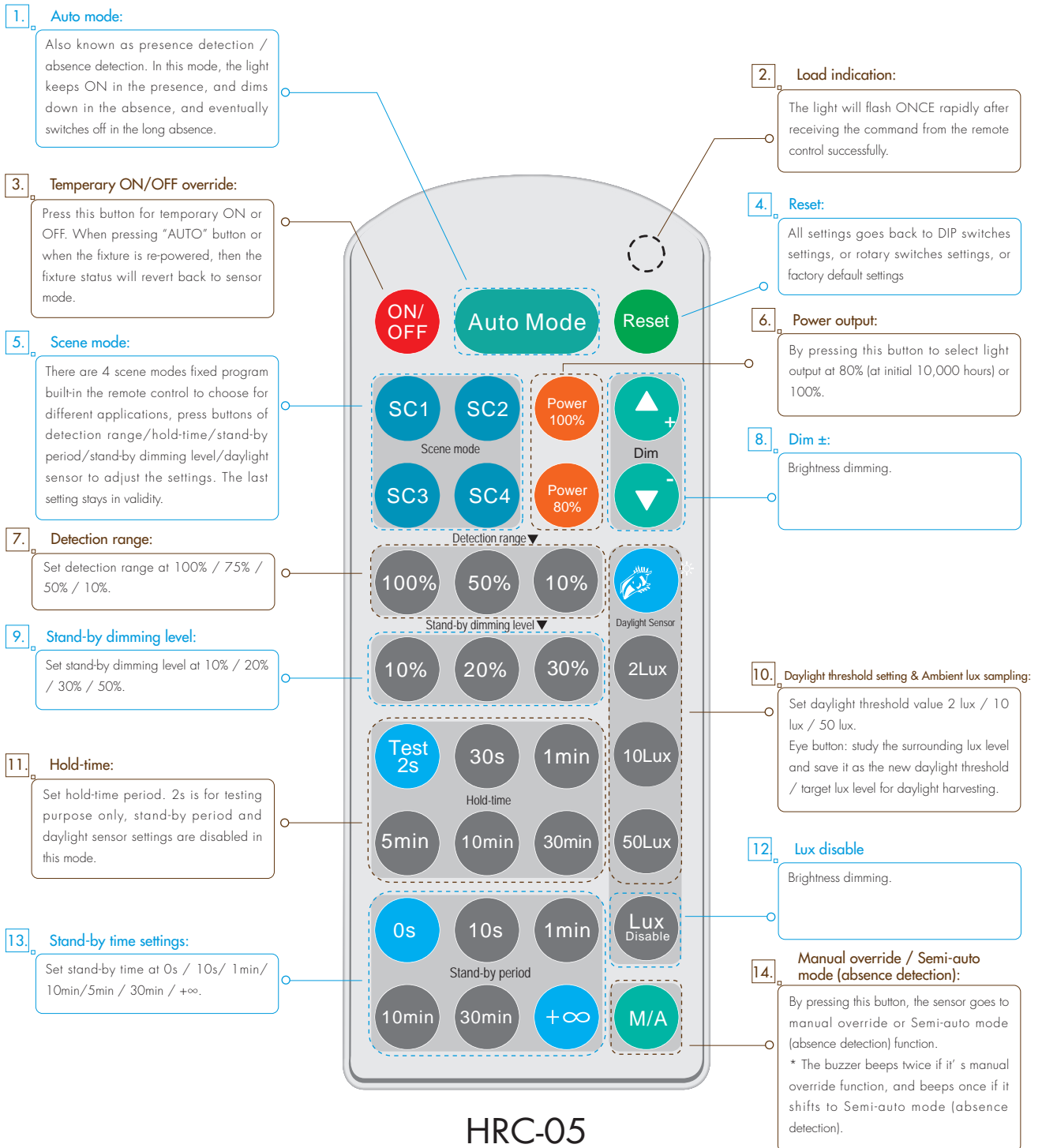
14. Lux disable:

By pressing this button, the built-in daylight sensor stops working, and all motion detected could trigger on the lighting fixture, no matter how bright the natural light is.



HRC-04

Remote Controller HRC-05



Remote Controller HRC-11

1. Auto / Semi-auto:
Also known as presence detection / absence detection. In semi-auto mode, the motion sensor is only activated on the manual press of push switch. The light keeps ON in the presence, and dims down in the absence, and eventually switches off in the long absence.

2. Load indication:
The light will flash ONCE rapidly after receiving the command from the remote control successfully.

3. Temporary ON/OFF override:
Press this button for temporary ON or OFF. When pressing "AUTO" button or when the fixture is re-powered, then the fixture status will revert back to sensor mode.

4. Reset:
All settings goes back to DIP switches settings, or rotary switches settings, or factory default settings

5. Sensor off mode:
The function of motion detection is disabled. The function of photocell is also disabled.

6. Twilight mode:
The function of motion detection is disabled. The function of photocell is still working, and the product becomes a pure dusk / dawn daylight sensor.

7. Power Output:
Press to select light output at 80% (at initial 10,000 hours) or 100%.

8. CCT ±:
Color tuning.

9. One-key commissioning:
Use "Start", "Memory" and "Apply" button to save a set of sensor parameters and send to all the target fixtures, quick and simple!

10. Dim ±:
Brightness dimming.

11. Tri-level & Daylight harvest:
Shift between tri-level control mode and daylight harvest mode.

12. Master DALI sensor in a DALI line:
Select a DALI sensor in a DALI line to be a "master", so that all other DALI sensors in the same DALI line will perform daylight harvesting/tri-level control based on the lux reading from this "master" sensor's daylight sensor.

13. Detection range:
Set detection range at 100% / 75% / 50% / 10%.

14. Daylight threshold setting & Ambient lux sampling:
Set daylight threshold value 2 lux / 10 lux / 50 lux / 100 lux / 300 lux / 500 lux. Eye button: study the surrounding lux level and save it as the new daylight threshold / target lux level for daylight harvesting.

15. Stand-by time settings:
Set stand-by time at 0s / 10s / 1min / 10min / 5min / 30min / +∞.

16. Hold-time:
Set hold-time period. 2s is for testing purpose only, stand-by period and daylight sensor settings are disabled in this mode.

17. 24h auto-configuration:
Select a time period and the sensor will do light level measurement and determine / save the lowest light level (commission line) with 100% on, so as to automatically set the target lux level for daylight harvesting.

18. Stand-by dimming level:
Set stand-by dimming level at 10% / 20% / 30% / 50%.

19. RF pairing mode:
Short press "learn / erase" button to activate pairing mode, then press "transmit" on a primary mode and all the receiver modules will beep 3 times in 1s to indicate the success of pairing. Long press the "learn / erase" button for 3s will erase all the commands received previously.

20. Rx Stand-by:
Choose one of the four detection mode: "HF only", "PIR only", "HF / PIR" or "HF & PIR".

21. Rx Stand-by:
Press button RX100%, the light on receiver unit is 100% upon receiving RF on signal; Press button RX STBY% button, the light(s) goes to pre-set stand-by dimming level directly.

HRC-11

Note:
For On/Off control products, the stand-by time setting still works and accumulates to hold-time. These products include HMW28/PRO, HMW28/H, HMW28VFC/PRO, HC049S, HIR28 series, HMW20, HMW30 and HIM30.e.g. For HC049S, when set hold time to 5min, and set stand-by time to 10min, then the HC049S will be 100% on for 15min before it switches off the fixture.

Remote Controller HRC-12

1. Temporary ON/OFF override:

Press this button for temporary ON or OFF. When pressing "AUTO" button or when the fixture is re-powered, then the fixture status will revert back to sensor mode.

3. Reset:

All settings goes back to DIP switches settings, or rotary switches settings, or factory default settings.

5. Hold-time:

Set hold-time period.

7. Daylight threshold setting & Ambient lux sampling:

Set daylight threshold value 2 lux / 10 lux / 50 lux / 100 lux / 300 lux / 500 lux.
Eye button: study the surrounding lux level and save it as the new daylight threshold / target lux level for daylight harvesting.

2. Load indication:

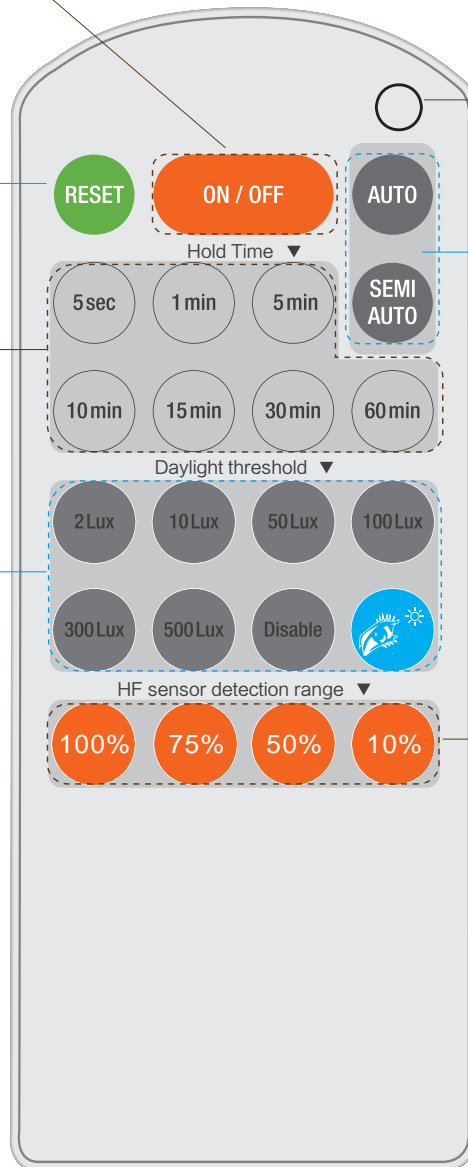
The light will flash ONCE rapidly after receiving the command from the remote control successfully.

4. Auto / Semi-auto:

Also known as presence detection / absence detection. In semi-auto mode, the motion sensor is only activated on the manual press of push switch. The light keeps ON in the presence, and dims down in the absence, and eventually switches off in the long absence.

6. HF sensor detection range:

Set detection range at 100% / 75% / 50% / 10%.



HRC-12