



1. Technical Specifications

Operation frequency	2.4 GHz - 2.483 GHz
Transmission power	0 dBm
Range (Typical indoor)	10~30m
Protocol	Bluetooth®
Power supply	Self-powered (kinetic energy)
Lifetime	100,000 actuation (switching cycles)
Housing material	PC
Dimensions (L x W x H)	86x86x15mm
Operation temperature	Ta: -10°C ~ +40°C
Switch pressing force	≅ 700g (reference only, individual variations exist)
IP rating	IP20


2. Download the App

Free App for set-up and commissioning







android



iOS





for iOS



for android

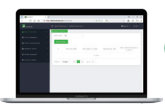
Smartphone app for both iOS & Android platform






for iPad

Koolmesh Pro app for iPad



Web

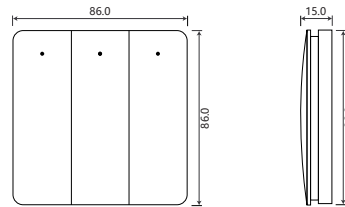
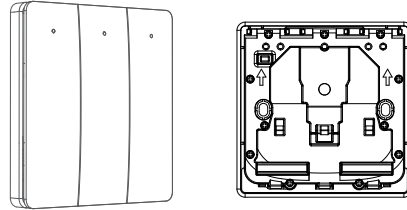


for Web

Web app/platform: www.iot.koolmesh.com

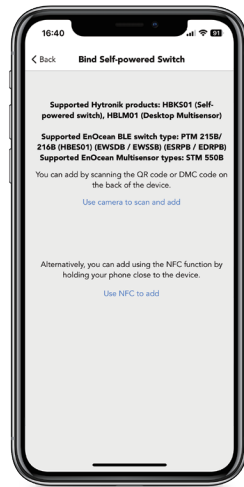
3. Installation

Mechanical Structure & Dimensions

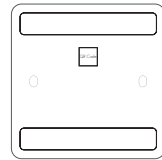


QR code scanning via **Koolmesh®** app

*Use camera to scan and add

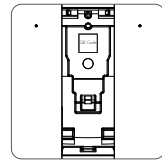


A. Before installation



Scan the QR code on the back of the switch to pair the device.

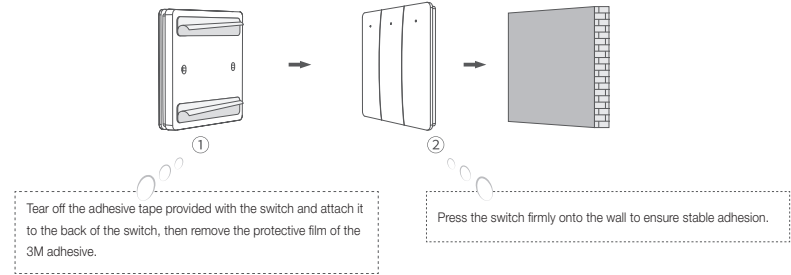
B. After installation



1. Open the middle button by hand.
2. Scan the QR code to pair the device.

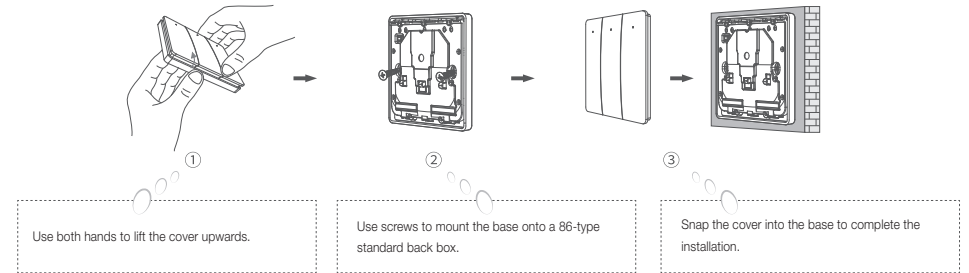
Method 1: Adhesive Mounting

*If the wall surface is clean and smooth, directly peel off the double-sided adhesive tape and stick the switch to the wall.



Method 2: Installation with Original Switch Box

*If prefer to install it on the original switch box, use screws for installation.



4. Dimming Interface Notes

Detailed Push switch configurations can be set on Koolmesh app.

Switch Function	Action	Descriptions
Push switch	Short press (< 1 second) * Short press has to be longer than 0.1s, or it will be invalid.	<ul style="list-style-type: none"> - Turn on/off - Turn on only - Turn off only <ul style="list-style-type: none"> - Recall a scene - Quit manual mode - Do nothing
	Long press (≥ 1 second)	<ul style="list-style-type: none"> - Dimming - Colour tuning (Warm to Cool White) - Do nothing

5. Additional Information / Documents

1. To learn more about detailed product features/functions, please refer to www.hytronik.com/download -> knowledge -> Introduction of App Scenes and Product Functions
2. Regarding precautions for Bluetooth product installation and operation, please kindly refer to www.hytronik.com/download -> knowledge -> Bluetooth Products - Precautions for Product Installation and Operation
3. Data sheet is subject to change without notice. Please always refer to the most recent release on www.hytronik.com/products/bluetooth-technology -> Bluetooth Accessories
4. Regarding Hytronik standard guarantee policy, please refer to www.hytronik.com/download -> knowledge -> Hytronik Standard Guarantee Policy