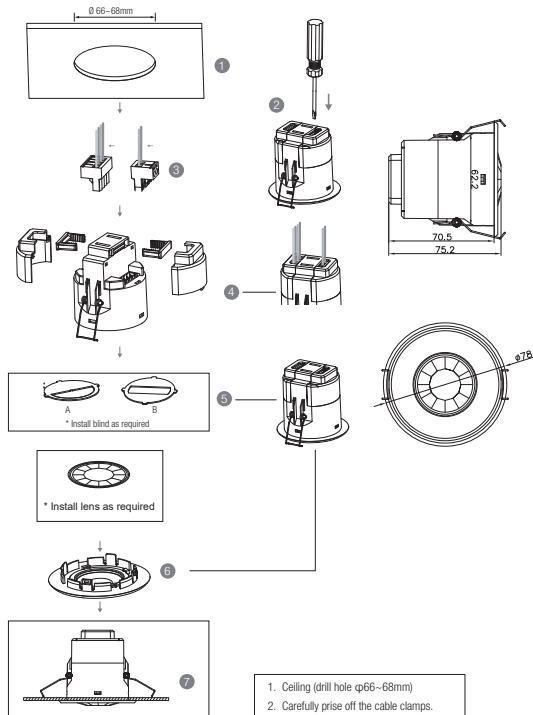


1. Technical Specifications

Mains voltage	220–240VAC 50/60Hz
Stand-by power	<0.5W
Switched power	Max. 80mA
Warming-up	Appr. 20s
Sensor principle	PIR detection
Detection range (Max.)*	Installation Height: 6m Detection Range (Ø): 9m
Detection angle	360°
Operation temperature	Ta: -20°C ~ +50°C
IP rating	IP20 / IP54

2. Installation

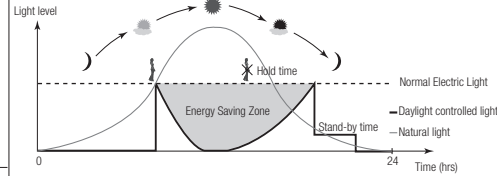


- Ceiling (drill hole $\phi 66-68\text{mm}$)
- Carefully prise off the cable clamps.
- Make connections to the pluggable terminal blocks.
- Insert plug connectors and secure using the provided cable clamps, then clip terminal covers to the base.
- Fit detection blind (if required) and desired lens.
- Clip fascia to body.
- Bend back springs and insert into ceiling.

3. Functions

3.1 Daylight Harvest (Daylight Regulating)

Daylight sensor measures the available surrounding natural light, calculates how much electrical light is needed to reach the total lux expected. The demand is given to the LED driver by DALI signal, so as to deliver the needed amount of electric light.



3.2 Manual Override

With the help of push-switch, this sensor can be over-riden by the end-user to manually switch on/off the light, which makes the product more user-friendly and offers more options to fit some extra-ordinary demands:

* Short Push (<1s): on/off function;

On → Off: the light turns off immediately and cannot be triggered ON by motion until the expiration of pre-set hold-time. After this period, the sensor goes back to normal sensor mode.

Off → On: the light turns on and goes to sensor mode, no matter if ambient Lux level exceeds the daylight threshold or not.

* Long Push (>1s): adjust the target lux level by turning the light up or down. Both the adjustment on remote control and push switch can overwrite each other. The last adjustment remains in memory.

Note: if end-user do not want this manual override function, just leave the "push" terminal unconnected to any wire.

3.3 Semi-auto Mode (Absence Detection)

Selecting this mode will activate the following logic:

Manual on - The lights will not switch on until they have manually been switched on at the wall switch. The occupancy sensor is inactive whilst the lights are off.

Auto off - When the lights are on, the sensor becomes active and monitors the space for activity. Once the area is vacated (absence selection), the sensor will automatically switch off the lights if the last person out forgets to switch off the light manually.

Note: The wall switch can be assigned to function 3.2 or 3.3, but not both. The default function is manual override.

3.4 Synchronisation Function

By connecting the "SYNC" terminals in parallel (see wiring diagram), no matter which sensor detects motion, all HIR27 in the group will turn on the lights when surrounding natural light is below the daylight threshold. The detection area could be widely enlarged in this way.

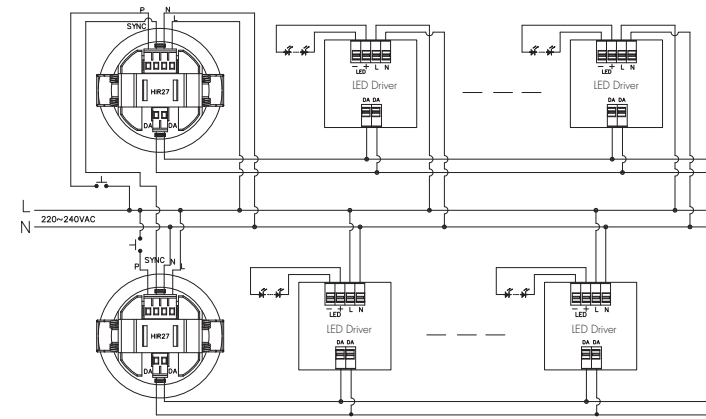
4. Wiring Diagram

Wire Preparation



Pluggable screw terminal. It is recommended to make connections to the terminal before fitting to the sensor.

- 200 metres (total) max. for 1mm² CSA (Ta = 50°C)
- 300 metres (total) max. for 1.5mm² CSA (Ta = 50°C)



—This product should be installed by a qualified electrician.

5. Detection Pattern & Optional Accessories

HIR27 (Low-bay)

HIR27: Low-bay flat lens detection pattern for single person @ Ta = 20°C
(Recommended ceiling mount installation height **2.5m-6m**)

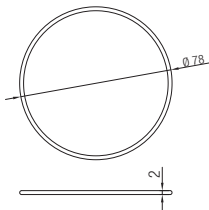
Mount height	Tangential (A)	Radial (B)
2.5m	max 50m ² (Ø = 8m)	max 13m ² (Ø = 4m)
3m	max 64m ² (Ø = 9m)	max 13m ² (Ø = 4m)
4m	max 38m ² (Ø = 7m)	max 13m ² (Ø = 4m)
5m	max 38m ² (Ø = 7m)	max 13m ² (Ø = 4m)
6m	max 38m ² (Ø = 7m)	max 13m ² (Ø = 4m)

Optional Accessory --- Ceiling/Surface Metal Mount Box: HA09/W, HA09/B, HA09/G

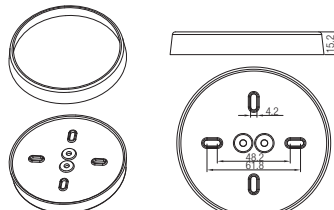
Optional Accessory --- Blind Insert for Blocking Certain Detection Angles

Big and small silicon gasket used to make IP54 degree protection (mounted into HA09 housing for ceiling mount)

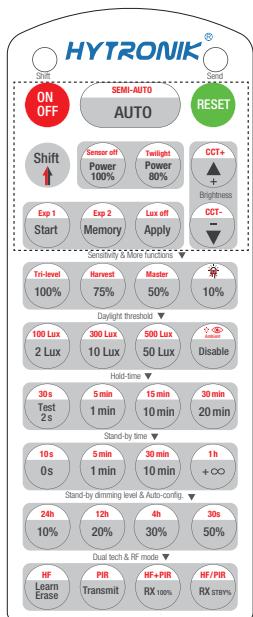
Small silicon water-proof gasket dimension(size:mm)



Big silicon water-proof gasket dimension(size:mm)

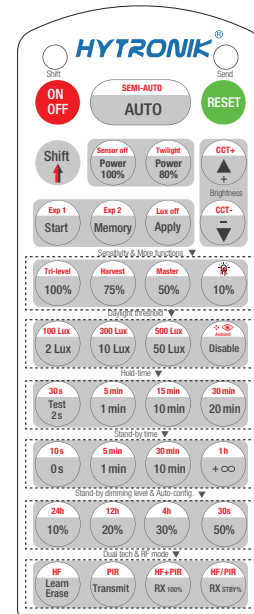


6. Description of the Button Functions (remote control HRC-11)



HRC-11

	Press button "ON/OFF" to select permanent ON or permanent OFF mode. * Press button "AUTO"/"RESET" to exit this mode.
	Press button "RESET", all settings go back to default. The default settings are: Auto mode; DALI Master mode; Hold-time 5min; Daylight sensor disable; Stand-by time: 10min; Stand-by dimming level: 20%; Maximum Brightness; LED indication off;
	Press button "Shift", the LED on the top left corner is on to indicate mode selection. All values / settings in RED are valid for 20 seconds.
	Press button "AUTO" to initiate automatic mode. The sensor starts working and all settings remain as before the light is switched ON/OFF;
	1. Press button "Shift", the red LED on. 2. Press button "SEMI-AUTO" to initiate Semi-auto mode. The sensor is only activated with the manual press of push switch. To exit this mode, simply press button "SEMI-AUTO" again. <i>For Sensor LED indicator references: Remains on 2s, initiate "Semi-auto" mode from "Auto" mode.</i>
	Press buttons in zone "Power out" to select the light output at 80% (at initial 10,000 hours) or 100%.
	1. Press button "Shift", the red LED on. 2. Press button "Twilight", the function of movement detection is disabled, but the function of photocell is still working, and the product becomes a pure dusk/ dawn daylight sensor. To exit from "Twilight" mode, press button "AUTO"/"SEMI-AUTO"/"RESET". Note: "Sensor off" function is not applicable on this product.
	Press these two buttons to adjust the light output brightness and set a new target lux level. The daylight sensor can measure ambient daylight level and ignore the LED light, so as to calculate how much artificial light is needed to maintain the target lux level.
	This key is not applicable on this product.
	1. Press button "Start" to program. 2. Select the buttons in "Detection range", "Daylight threshold", "Hold-time", "Stand-by time", "Stand-by dimming level" to set all parameters. 3. Press button "Memory" to save all the settings programmed in the remote control. 4. Press button "Apply" to set the settings to each sensor unit(s). <i>For example, to set detection range 100%, daylight threshold Disable, hold-time 5min, stand-by time +∞, stand-by dimming level 30%, the steps should be: Press button "Start", button "100%", "Disable", "Shift", "5min", "Shift", "+∞", "30%", "Memory". By pointing to the sensor unit(s) and pressing "Apply", all settings are passed on the sensor(s).</i>
	This key is not applicable on this product.
	"Exp" refer to Expansion, these two buttons are reserved functions and pending future development.



HRC-11

Sensitivity & More functions	
100% 75% 50% 10%	This key is not applicable on this product.
	This key is not applicable on this product.
	This key is not applicable on this product.
Daylight threshold	
2 Lux 100 Lux 10 Lux 300 Lux 50 Lux 500 Lux Disable	Press buttons in zone "Daylight threshold" to set daylight sensor at 2Lux/ 10Lux / 50Lux / 100Lux / 300Lux/500Lux / Disable. <i>Note: To set daylight sensor at 100Lux / 300Lux/500Lux, press "Shift" button first.</i>
	1. Press button "Shift", the red LED on. 2. Press button "Ambient", the surrounding lux level is sampled and set as daylight threshold / target lux level.
Holdtime mode	
Test 2s 1min 5min 10min 15min 20min 30min	In AUTO /SEMI-AUTO modes, press buttons in zone "holdtime" to set the hold-time at 2s / 30s / 1min / 5min / 10min / 15min / 20min / 30min. <i>Note: 1. To set holdtime at 30s / 5min / 15min / 30min, press "Shift" button first. 2. 2s is for testing purpose only, stand-by period and daylight sensor settings are disabled in this mode. *To exit from Test mode, press button "RESET" or any button in "Holdtime".</i>
Stand-by time mode	
0s 10s 1min 5min 10min 30min +∞ 1h	Press buttons in zone "stand-by time" to set the stand-by period at 0s / 10s / 1min / 5min / 10min / 30min / 1h / +∞. <i>Note: 1. To set stand-by time at 10s / 5min / 30min / 1h, press "Shift" button first. 2. "0s" means on/off control; 3. "+∞" means bi-level control, the fixture is 100% on when there is motion detected, and remains at the stand-by dimming level when no presence after motion hold-time. Only when the stand-by time is set in "+∞" and the ambient lux level is below the target lux level, the lux will auto-on.</i>
Stand-by dimming level & Auto-config.	
10% 20% 30% 50%	Press the button in zone "stand-by dimming level" to set the stand-by dimming level at 10% / 20% / 30% / 50%.
	1. Press button "Shift", the red LED on. 2. Select a time period and the sensor will do light level measurement and determine/save the lowest light level (commission line) with 100% light on, so as to set the target lux level automatically. <i>Note: 1. Make sure the light level measurement covers the night time. 2. The fixture will go into sensor mode after the measurement, all sensor setting remain unchanged.</i>
Dual tech & RF mode	
	This key is not applicable on this product.
	This key is not applicable on this product.
	This key is not applicable on this product.

7. Additional Information / Documents

- Regarding precautions for PIR sensor installation and operation, please kindly refer to www.hytronik.com/download ->knowledge ->PIR Sensors - Precautions for Product Installation and Operation
- Regarding Hytronik standard guarantee policy, please refer to www.hytronik.com/download ->knowledge ->Hytronik Standard Guarantee Policy