

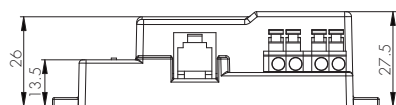
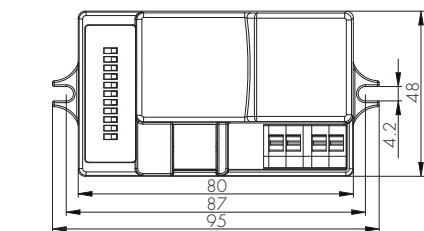
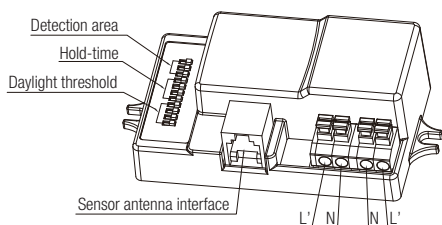
HF MOTION SENSOR DETACHED VERSION HC009S-KD/I

Installation and Instruction Manual

1. Technical Specifications

Product Type:	ON/OFF Control Microwave Motion Sensor
Operating Voltage:	220-240VAC 50Hz/60Hz
HF System:	5.8GHz CW radar
Transmission Power:	< 0.2mW
Rated Load:	800W (resistive load) 400W (capacitive load)
Detection Angle:	30~150°
Power Consumption:	< 0.6W
Detection Range :	Max. 12 meters in diameter, adjustable
Time Setting:	10s ~ 30 min.
Mounting:	Indoors, Ceiling & walling mounted
Light Control:	5~50 lux, disable
Working Temperature:	-20 ~ +60°C

2. Dimensions (mm)



3. Functions

1. Lux Off Function

The built-in daylight sensor can measure ambient natural light and switch off the fixture automatically whenever artificial light is not required (natural light lux level exceeds daylight threshold).

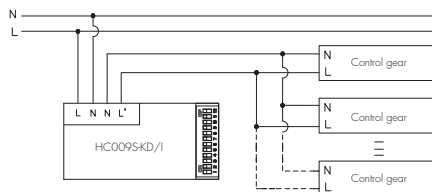
2. Zero-cross Relay Operation

Designed in the software, the sensor switches on/off the load right at the zero-cross point, to ensure the in-rush current is minimised, enabling the maximum life-time of the relay.

3. Loop-in and Loop-out Terminal

Double L N terminal makes it easy for wire loop-in and loop-out, and saves the cost of terminal block and assembly time.

4. Wiring Diagram

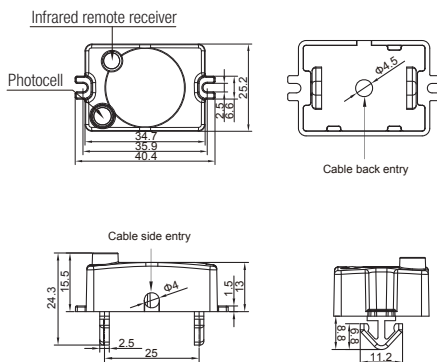


This sensor is suitable for indoor use, and is also designed for installation Max. 5m in height.

5. Sensor antenna

Model SAM5/I

Super-compact sensor antenna, with Hytronik specially designed intelligent photocell built inside.

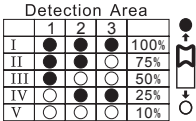


6. Settings

Detection Range

This determines the effective range of the motion detector and is set by DIP switches at the sensor itself, refer to figure. Note that reducing the sensitivity will also narrow the detection range. The following settings are available:

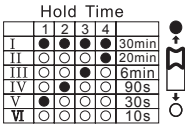
- I - 100%
- II - 75%
- III - 50%
- IV - 25%
- V - 10%



Hold Time

Select the dip switch configuration for the full brightness on-time after presense detection. Please note that this function is disabled when the natural daylight exceeds the daylight threshold setting more than 5 minutes.

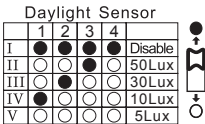
- I - 30min
- II - 20min
- III - 6min
- IV - 90s
- V - 30s
- VI - 10s



Daylight Sensor

This setting holds off the 100% light output should there sufficient daylight and is set using DIP switches at the sensor, refer to figure. The following settings are available.

- I - disable
- II - 50Lux
- III - 30Lux
- IV - 10Lux
- V - 5Lux



* In disable mode the lamp(s) will always be on with motion detected and operate at 100% light output, even in bright daylight.

7. Troubleshooting

MALFUNCTION	CAUSE	REMEDY
The fixture does not light up	Incorrect daylight threshold setting	Adjust daylight threshold setting
	Faulty fixture	Replace fixture
	No power supply	Check power to sensor
	Detection zone not targeted	Check detection area setting
The fixture is always on	Continous movement in the detection zone	Check detection area setting
The fixture is on when it should not	Sudden change in temperature due to weather (wind, rain, snow) or air expelled from fans, or open windows	Adjust zone, change installation site