

HT01 / HT02 / HT03



Applications

At the heart of any good DALI system is a reliable power supply unit. Hytronik DALI power supplies are fully isolated and the range includes power supplies for building discreetly into equipment or for addition to larger DIN rail mounted systems.

Features

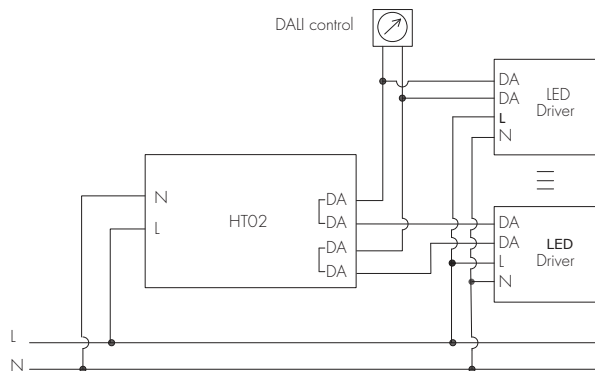
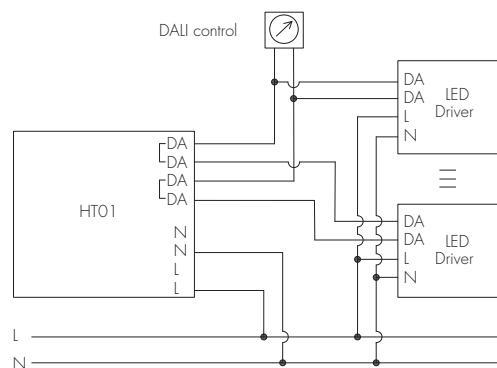
- DALI
- Short Circuit Protection
- Over-load Protection
- 5 Year, 50,000hr Warranty

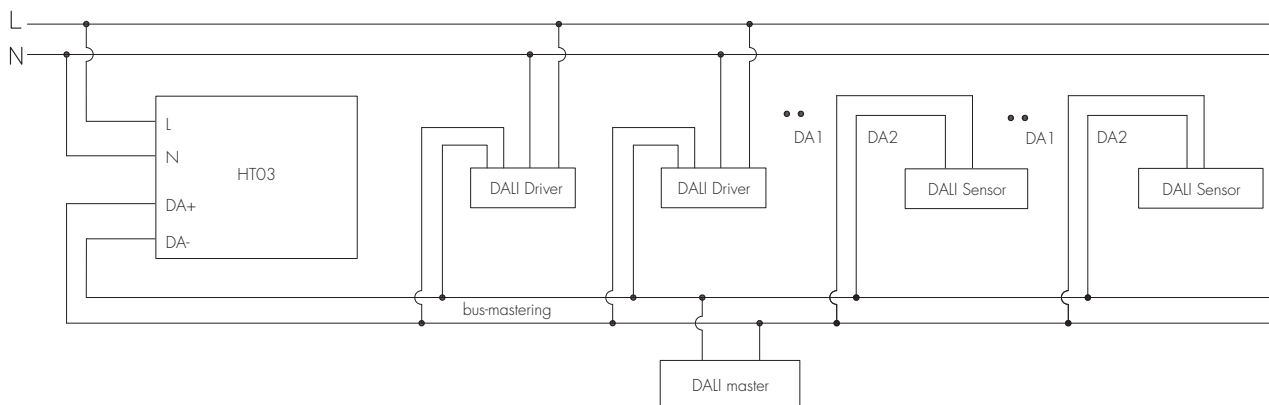


Technical Data

Model No.	HT01	HT02	HT03
Product Type	DALI bus power supply	DALI bus power supply	DALI bus power supply
Mounting Type	Built-in	Din rail mounting	Built-in
Operating Voltage	220-240VAC 50/60Hz	220-240VAC 50/60Hz	220-240VAC 50/60Hz
Rated Load	6W	6W	3W
Input Current	25~30mA	25~30mA	25~30mA
Output Current	240mA (Maximum)	240mA (Maximum)	90mA (Maximum)
Output Voltage	16V \pm 10%	16V \pm 10%	16V \pm 10%
Operating Temperature	Ta: -20~+50°C Tc: 80°C		
Safety Standard	EN61347-1, EN62493, EN61347-2-11		
EMC Standard	EN55015, EN61547, EN61000-3-2, EN61000-3-3		
DALI Standard	IEC62386-101 ; IEC62386-102		
Dielectric Strength	Input -> output 3000VAC		
Certifications	Semko, CB, SAA, CE, EMC		

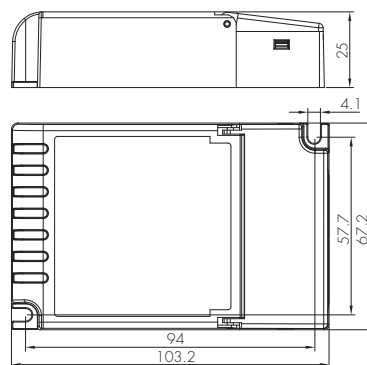
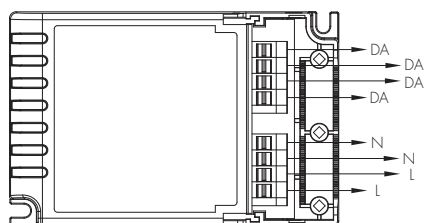
Wiring Diagram



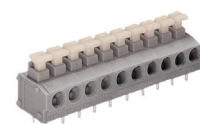


Dimensions and Terminals

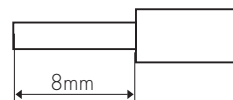
HT01



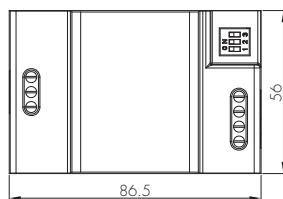
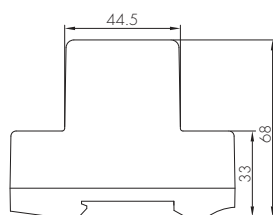
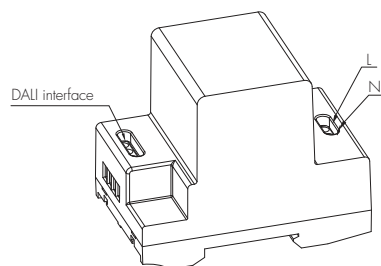
Wire Preparation



0.75 - 1.5mm²



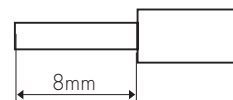
HT02



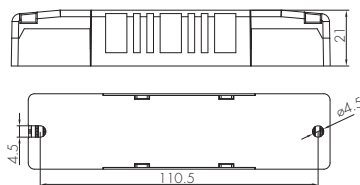
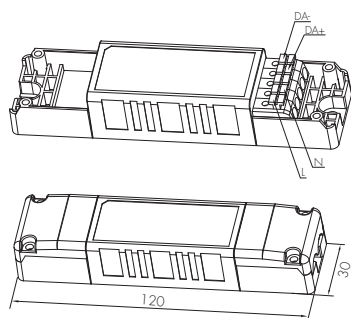
Wire Preparation



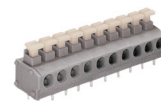
0.75 - 4.0mm²



HT03



Wire Preparation



0.75 - 1.5mm²

