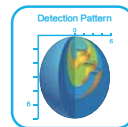
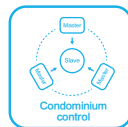
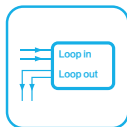
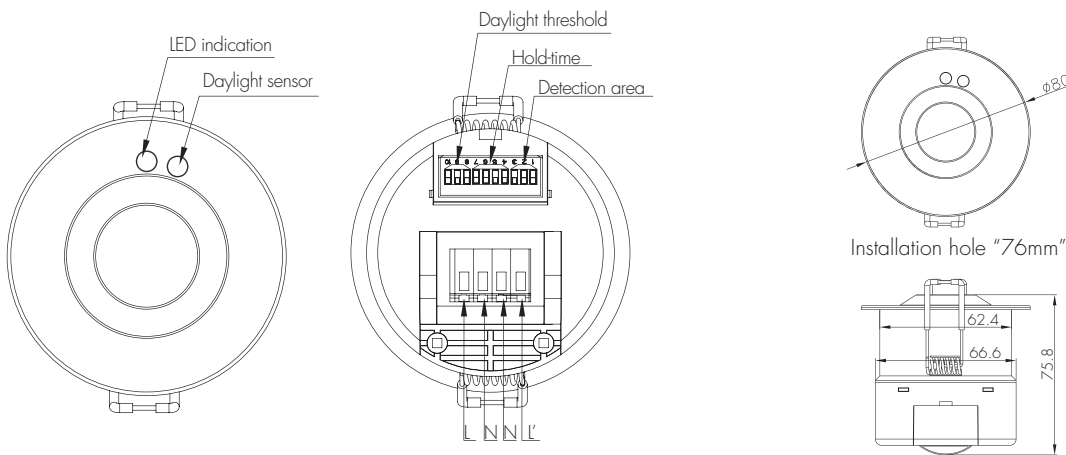


# Flush Mounting Version On/off control

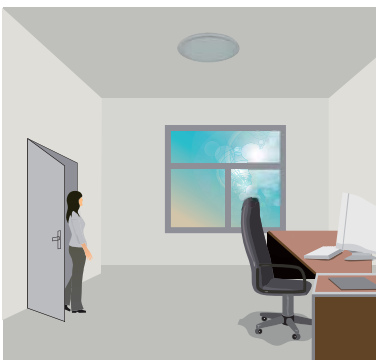
Model: HC002S



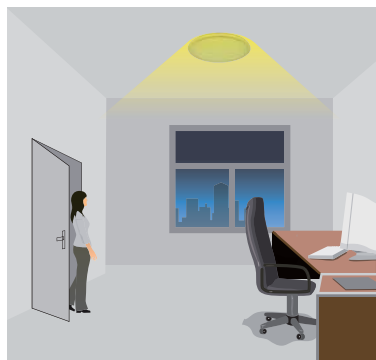
## Functions and Options

### 1 On-off Control

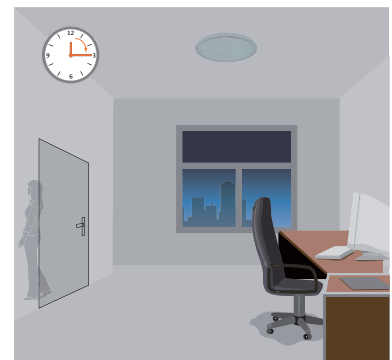
This sensor is a motion switch, which turns on the light on detection of people movement, and turns off after a pre-selected hold-time when there is no people around. A daylight sensor is also built-in to prevent the light switching on when there is sufficient natural light.



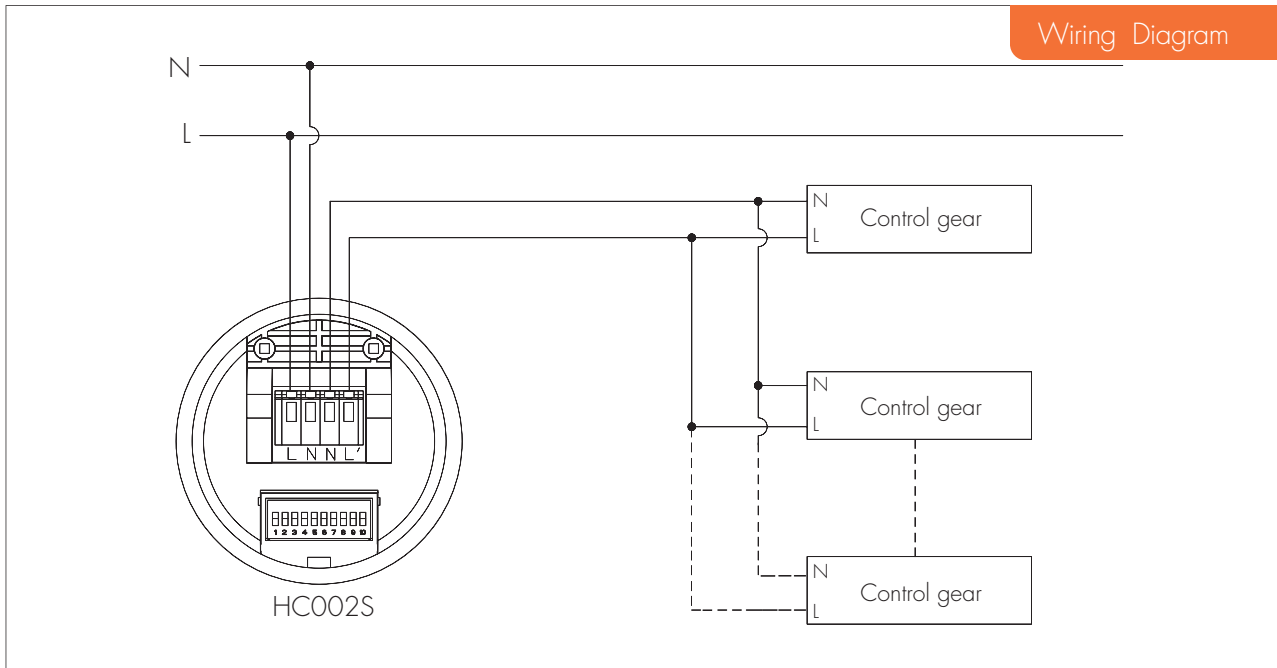
With sufficient natural light, the light does not switch on when presence detected.



With insufficient natural light, the sensor switches on the light automatically when person enters the room.



The sensor switches off the light automatically after the hold-time when there is no motion detected.



## 2 100H burn-in mode for fluorescent lamp

Switch the power supply to the sensor three times within 3 seconds, light will be 100% on for 100 hours, and then automatically goes to sensor mode after 100 hours. This is crucial to secure the lifetime of fluorescent lamp, when new fixture is installed, or old lamp is replaced.

*Note: this 100H burn-in feature can be cancelled by turning off/on the fixture 1 cycle within 1 second.*

## 3 Ambient daylight threshold

Switch the power supply to the sensor two times within 2 seconds, the sensor can set the ambient lux level as the new threshold. Both the settings on DIP switch and the ambient lux threshold learned can overwrite each other.

This feature enables the daylight sensor to be commissioned to the environment in which it is installed. The latest action controls. (More details of the operation procedure please refer to user manual).

## 4 Condominium control function

In many cases, several sensors are connected together to control the same fixture, or to trigger on each other, the sudden on/off of the lamp tube or the ballast/driver causes huge magnetic pulse, which may mistrigger the sensor. This sensor has a very advanced software to ignore that interference.

By connecting L' terminal with L' on another sensor, if any of the master fixture (containing sensor) is triggered, all luminaries (including slaves and other master unit in the group) will also light up.

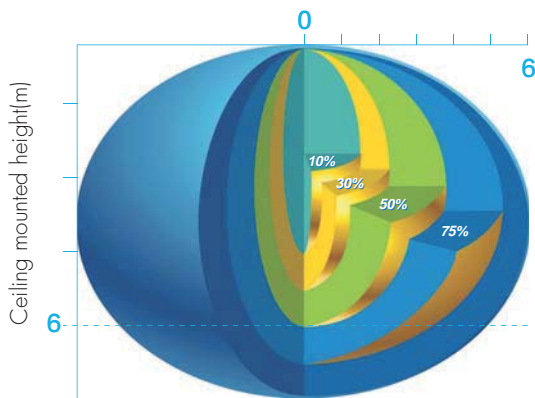
## 5 Zero-cross relay operation

Designed in the software, sensor switches on/off the load right at the zero-cross point, to ensure the in-rush current is minimised, enabling the maximum lifetime of the relay.

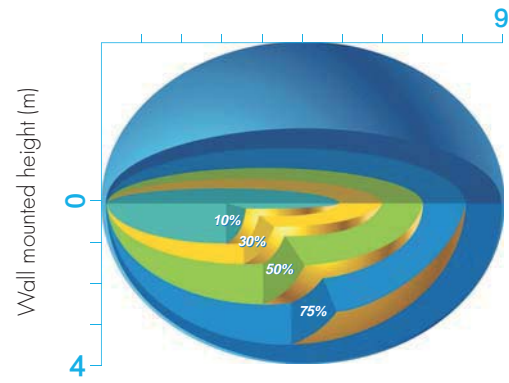
## 6 Loop-in and loop-out terminal

Double L N terminal makes it easy for wire loop-in and loop-out, and saves the cost of terminal block and assembly time.

## Detection Pattern



Ceiling mounted detection pattern (m)



Wall mounted detection pattern (m)

## Settings

### 1 Detection area

Detection area can be reduced by selecting the combination on the DIP switches to fit precisely for each specific application.

	1	2	3	
I	●	●	●	100%
II	○	●	●	75%
III	●	○	●	50%
IV	●	●	○	25%
V	○	○	○	10%

I – 100%  
II – 75%  
III – 50%  
IV – 25%  
V – 10%

### 2 Hold-time

Hold-time means the time period you would like to keep the lamp on 100% after the person has left the detection area.

	1	2	3	4	
I	●	●	●	●	5s
II	○	●	●	●	30s
III	●	○	●	●	1min
IV	●	●	○	●	5min
V	●	●	●	○	10min
VI	○	○	○	○	30min

I – 5s  
II – 30s  
III – 1min  
IV – 5min  
V – 10min  
VI – 30min

### 3 Daylight sensor

The daylight threshold can be set on DIP switches, to fit for particular application.

"Daylight" : The lamp works always, even during daylight.

"Twilight" : The lamp works only in twilight and darkness.

"Darkness" : The lamp works only in darkness.

	1	2	3	
I	●	●	●	2Lux
II	○	●	●	10Lux
III	●	○	●	30Lux
IV	●	●	○	50Lux
V	○	○	○	Disabled

I – 2 Lux  
II – 10 Lux  
III – 30 Lux  
IV – 50 Lux  
V – Disabled

## Technical Data

Operating voltage	220-240VAC
Switched power	Resistive load: 1200W, capacitive load: 400W
Stand-by power	0.5W
Warm time	20s
Detection area	10/25/50/75/100%, can be customized
Hold-time	5s/30s/1min/5min/10min/30min, can be customized
Daylight threshold	2~50Lux/ Disable, can be customized
Sensor principle	Microwave motion detector
Microwave frequency	5.8 GHz+/-75MHz
Microwave power	<0.2mW
Detection range	Max.( Ø x H): 12mX6m
Detection angle	30~150°
Mounting height	Max. 12m
Operating temperature	-20°C~60°C
IP rating	IP20
Certificate	Semko, CB, EMC, CE, R&TTE, SAA