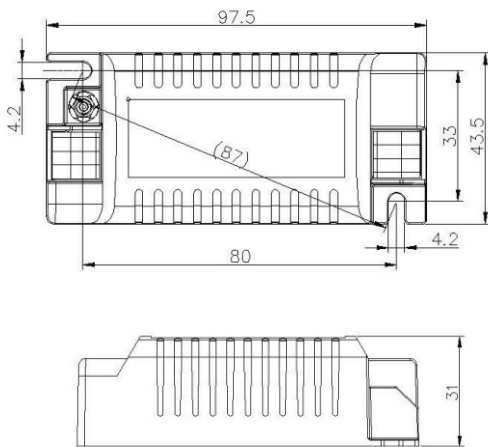
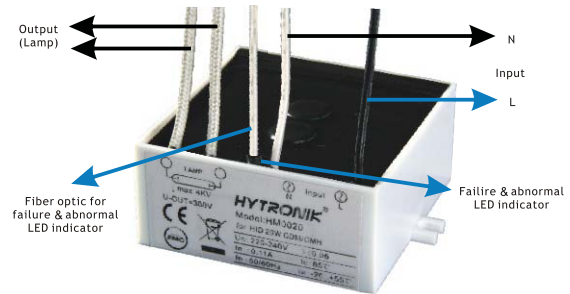
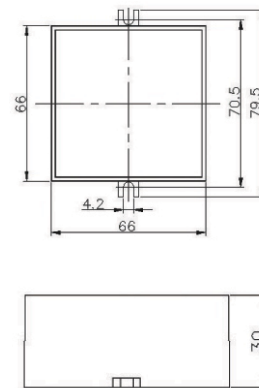


HID BALLAST

Standard non-dimmable 1x20w



Model: HM1020



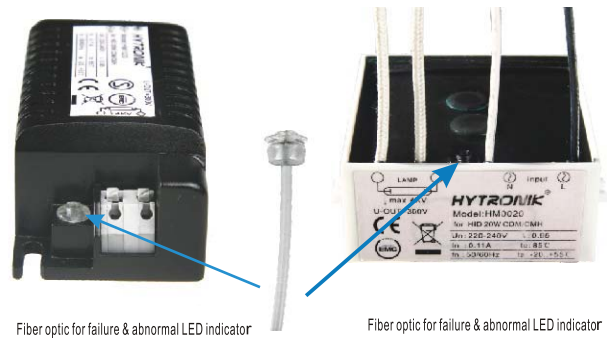
Model: HM0020

Product highlights:

- *Potted with silicon rubber for heavy duty task, hostile thermal conditions and tough climate.
- *Steady lamp performance by mains fluctuation and lamp tolerance.
- *Constant lamp power output and stable lamp colour temperature.
- *Abnormal protection against empty load, overheat, lamp end of life, lamp operation voltage too high or too low, restart on removing of obstacles and power reset.
- *Suitable for CDM, CMH, and HCI.
- *Pulse interval ignition.
- *Over 90% lumen factor during the lamp life.
- *Comprehensive energy saving by 35%.
- *High power factor; EEL = A1.
- *50,000 service hours at Tc max.

Failure & abnormal diagnose and indication.

The MCU is programmed with diagnosis on failure and abnormal operation. The MCU monitors the fixture and can send error signals to a LED on the ballast. The signal is carried through an optical fibre to a Lens on the enclosure of the fixture. The signal is displayed as a number of red flashes which indicates different errors.



Insert the fiber optic into the LED indication slot, then it carries the error signals to a Lens on the outside of fixture.

The error signals are indicated in 10 second intervals and 1 second between each flash.

Failure & abnormal error codes

No. of flashes	Error type	Error description	Action
•	no failure	starting lamp	no action
••	over-heat	ballast gets too hot	analyze reason
••••	lamp failure	Ignition timed out	change lamp or check the connection
••••••	lamp failure	lamp end of life	change lamp
••••••••	lamp failure	lamp voltage is too low	change lamp
••••••••••	lamp failure	lamp voltage is too high	change lamp
••••••••••••	ballast failure	ballast shut down for protection	change ballast

Apart from the error signals, the LED also displays a single steady signal when the fixture tries to ignite the light source.

Technical parameters:

Input voltage	220—240VAC
Input current	0.11A
Lamp power	22W (max)
Supply frequency	50/60Hz
Power factor	>0.95
Lamp output frequency	230Hz
Ta	- 40°C ~ + 50°C
Tc	85°C
Ignition voltage	1.5 Kv.
Output wire length	3 M (max)
Dimension (length*width*height)	97.5x43.5x31mm
U-OUT	300V

Approvals and standards:

This ballast is tested and approved according to EN61347-2-12, EN61347-1,EN55015(version:2009), EN61547,EN61000-3-2,EN61000-3-3.